



Protect



Signal /
Inform



Motorways &
Expressways



Roads



Worksites

ON-BOARD ILLUMINATED SIGNS POLYSIGNAL

ALPHAN

« Illuminated sign system that signals and informs during works or work operations. »

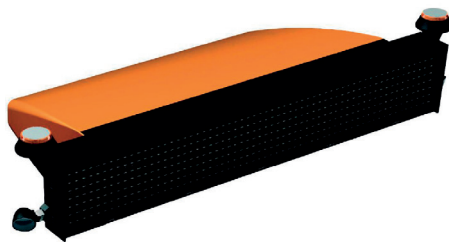
ADVANTAGES

> USE

- Simple, ergonomic design
- High-performance LED display boards
- Messages are easy to read
- Modular day/night lighting intensity

> USE

- Enhanced safety with reversing camera
- Easy use with touch-screen remote control and keypad



SOCIAL AND ENVIRONMENTAL BENEFIT

- **MADE IN FRANCE**
Made in the Nouvelle-Aquitaine region

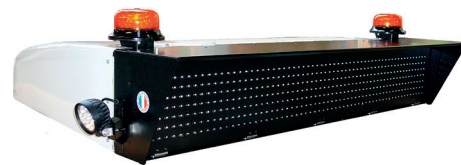




TECHNICAL CHARACTERISTICS

> FRAME & HOUSING

- Aluminium frame protected by a polyester and fibreglass aerodynamic housing, polyurethane anti-UV surface treatment
- Choice of colour
- 2 orange LED rotating beacons



Rear vision in reverse

> VARIABLE MESSAGE SIGNS (VMS)

- Variable Message Sign with up to 12 characters, composition height 200mm
- Display of operating messages (ACCIDENT, MOWING, PAINTING, WORKS)
- Brightness automatically adjusted by day/night unit (256 levels possible)

> "LYNX" REMOTE CONTROL UNIT

- LCD screen (touch-sensitive) and backlit keypad
- Video inputs in NTSC format with RCA connector
- Compatible with the range and updated via USB port



Night vision camera



OPTIONS

- Dual camera including reversing camera
- Blue flashing light



Blue LED flashing light



COMPLIANCE

- For the VMS boards and characters: NF EN 12966, XP P98573
- For the triangle: standards NF P98541