



Control



Secure



Signal



Urban space



Private sites

ACCESS CONTROL > RETRACTABLE BOLLARD

# BORNE ELECTR@



## BOLLARD RESISTANCE



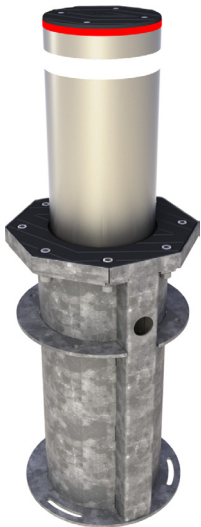
420 KJ  
a 1.7-ton vehicle at  
80 km/h



617 KJ  
a 2.5-ton vehicle  
at 80 km/h



864 KJ  
a 3.5-ton vehicle  
at 80 km/h



High-strength access control bollard for public or private roads. >>

## ADVANTAGES

### > RÉSISTANCE AND INTENSIVE USE

- **High resistance:** capable of absorbing up to 420 kJ, equivalent to the impact of a 1.7-ton vehicle traveling at 80 km/h.
- **Optimized endurance:** designed for very intensive use, the bollard features a silent electric motor ensuring user comfort and discretion
- **Civil engineering compatibility:** compatible with MÉTROPOLE range infrastructure (heights 500 and 600 mm)
- **Advanced customization:** wide range of options available, including illuminated cap, impact sensor, and other modules depending on site requirements

### > OPERATION & SIMPLIFIED MAINTENANCE

- **Optimized maintenance design** minimizes maintenance costs and intervention frequenc
- **Fast and safe intervention:** motor can be accessed from the top without removing the bollard
- **Easy servicing:** removable outer casing that can be replaced in just a few minutes

## SOCIETAL AND ENVIRONMENTAL BENEFITS

- **MADE IN FRANCE**  
Nouvelle-Aquitaine Region



MADE IN  
FRANCE





## TECHNICAL CHARACTERISTICS

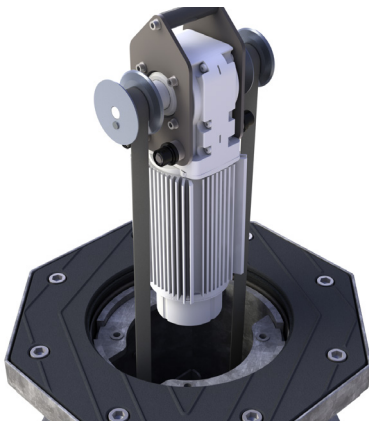
### > BOLLARD

- Heights: 530/600/800 mm, Ø 273 mm
- Structure: high-strength S355 steel, 10 mm thickness, hot-dip galvanized, with 2 mm stainless steel cladding
- External finish: stainless steel sleeve in 304L or 316L, brushed or painted (RAL or AKZO NOBEL color range)
- Reflective band on the upper section

Height (mm)	Weight of the complete unit (kg)
530	172
600	187
800	236

### > FOUNDATION UNIT (BELOW-GROUND STRUCTURE)

- Dimensions 478 x 478 mm
- Heights: 530 / 600 / 800 mm, Ø 273 mm
- Structure: high-strength S355 steel, 10 mm thickness, hot-dip galvanized, with 2 mm stainless steel cladding
- Lifting points for hoisting rings
- Anti-slip base plate, black (900 sandblasted finish)
- Installation: with or without sacrificial casing (recommended for new installations)



### > IMPACT RESISTANCE

- 420 kJ resistance, equivalent to a 1.7-ton vehicle at 80 km/h tested by a COFRAC-accredited laboratory

### > DRIVE SYSTEM

- Low-voltage electric motor, 230 Vac, fixed speed
- Raising time: 4 to 7 seconds (depending on height), lowering < 5 seconds
- Protection rating: IP67
- Ultra-high-strength drive belts
- Fail-safe operation: bollard lowers by gravity
- Position detection: inductive sensors for raised and lowered positions
- 20 m cable kit included



## OPTIONS

- Illuminated bollard top cap: red LEDs
- Impact sensor for status feedback to GENCARD WEB®
- RAL color finish
- 40 m cable kit, other lengths available on request



## CONFORMITY

- Complies with standard NF P98-310 and the PMR regulation governing the height and diameter of obstacle