



Control



Protect



Private sites



Urban space



Sensitive sites

ACCESS MANAGEMENT > RETRACTABLE BOLLARD

# HERCULE

## BOLLARD RESISTANCE



370KJ  
1.5T at 80km/h



617KJ  
2.5T at 80km/h



864KJ  
3.5T at 80km/h



## SOCIAL AND ENVIRONMENTAL BENEFIT

- MADE IN FRANCE  
Made in the Hauts-de-France region

Heavy-duty electro-hydraulic bollard prevents vehicles from entering secure areas.

## ADVANTAGES

### > USE

- Very heavy-duty safety bollard: 864kJ, i.e. a 3.5T vehicle travelling at 80km/h (certified by a crash test carried out by the Transpolis laboratory)
- Dual technical casing to separate the motor drive part from the bollard for greater strength
- Electro-hydraulic technology with unit integrated into the bollard
- Optional LED ring light at the top for improved visibility
- Multiple options available: shock sensor (alarms), LED ring light, special fixings and emergency opening by secure fingerprint

### > USE & MAINTENANCE

- Vandal-proof bollard: finished with a painted or brushed 316L stainless steel lining, enabling the outer casing to be refurbished quickly and inexpensively
- Easy maintenance: multiple handling and maintenance tools available

AXIMUM

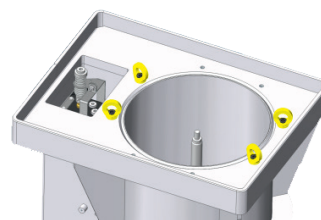
MADE IN  
FRANCE



## TECHNICAL CHARACTERISTICS

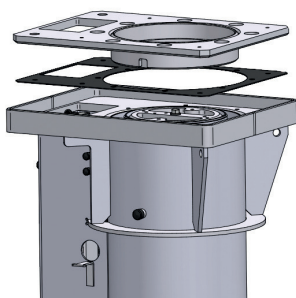
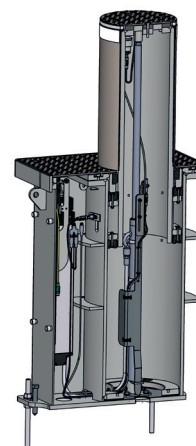
### > BOLLARD HEAD

- Height: 530/600/800mm, diameter 273mm
- S355 steel structure, 13.5/16mm thick, hot-dip galvanised + 2mm stainless steel lining
- External finish in 316L stainless steel jacket, brushed or painted to match RAL or AKZO NOBEL (standard colour Black 900 sandblasted, other colours optional)
- Reflective tape at the top



### > FRAME (UNDER THE ROADWAY)

- Dimensions 610 x 470mm, height 854 to 1,259mm depending on bollard head height
- S355 steel structure, 10mm thick, hot-dip galvanised
- S355 steel guide plate, 20mm thick with 50mm high guide tube, hot-dip galvanised
- Sockets for lifting rings
- 6/8mm tread plate anti-slip floor plate in sandblasted black 900 galvanised steel (RAL optional), or 304L or 316L stainless steel (optional)



### > RESISTANCE

- Resistance to 864kJ, or 3.5T travelling at 80 km/h

### > MOTOR DRIVE

- Movement controlled by a single-acting hydraulic cylinder (ascent 6 to 8s, descent < 4s)
- IP67 single-phase hydraulic unit integrated into the bollard frame, with biodegradable oil
- Negative safety on mains failure (bollard held up) or positive safety (bollard descends under its own weight)
- Emergency valve on hydraulic unit accessible or lockable

Height (mm)	Weight of complete bollard (kg)
530	450
600	500
800	600



## MAINTENANCE & OPTIONS

- Illuminated bollard cap (red or white LEDs)
- Impact sensor
- Lifting tools
- Installation template
- Secure fingerprint on emergency valve



## COMPLIANCE & PERFORMANCE

- Complies with standard NF P98-310 and the PMR decree regulating the height and diameter of obstacles