



Protect



Roads

Motorways &
Expressways

ROAD RESTRAINT SYSTEM ► SINGLE SIDED METALLIC BARRIER

REVOL 4.0

N2 W1

CE

» Safety barrier certified for reduced working width, with a support post every four metres, to protect vehicle users and cyclists. »

PERFORMANCE

NORMAL CONTAINMENT

N2 - W1 - ASI B

N: Containment level
W: Working width
SI: Impact severity level

SOCIAL AND ENVIRONMENTAL BENEFITS

- **SAVE RESOURCES**
The lightest French barrier in N2 W1 performance
- **MADE IN FRANCE**
Made in the Hauts-de-France region

ADVANTAGES

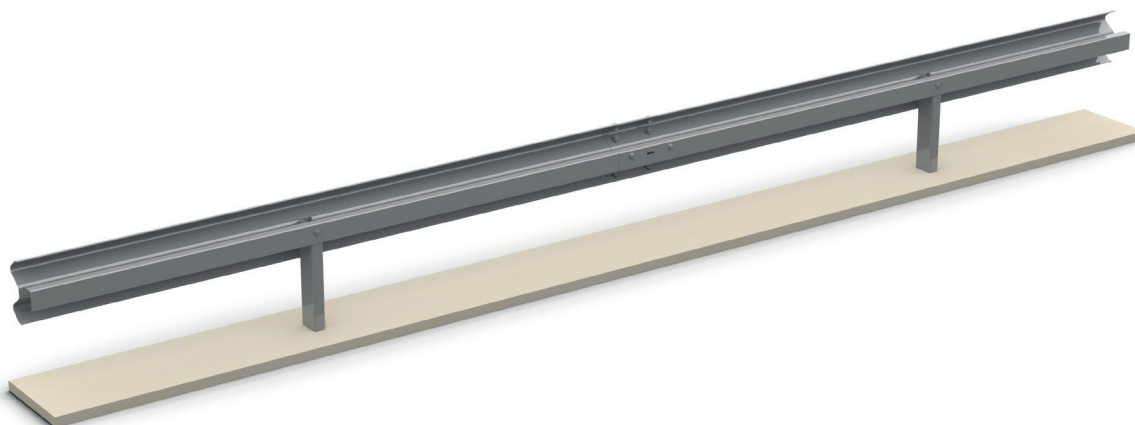
► USE

- Road restraint system with CE certification in level N2 for light vehicles containment
- **Can be installed along cycle tracks:** the angle at the rear of the system protects the rear protrusion of the support posts and ensures protection for cyclists
- Customisation with powder coating to suit specific environments

► INSTALLATION / USE

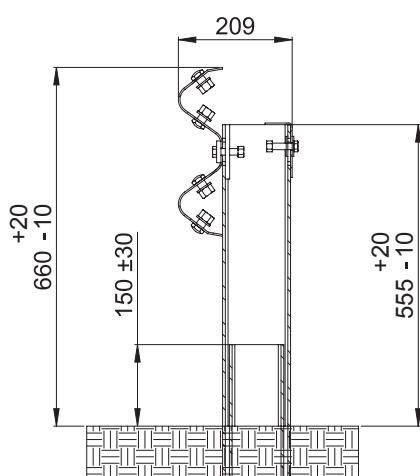
- **Lightweight system with no spacer:** takes up very little cross-sectional space
- **Minimum lane length of just 40m** to optimise installation costs
- **Minimal maintenance costs:** repairs requiring only minor replacement of components
- NF058-certified connections with the other systems in our CE ranges (Plus and Evol ranges), as well as with generic FN single sided barriers

MADE IN
FRANCE



TECHNICAL CHARACTERISTICS

- Galvanised steel system with component identification and traceability (manufacturing batch number + factory punch)
- System consisting of a row of type A barriers directly connected to brackets driven onto the edge
 - A-profile beam: 4.315ml
 - C125 type racket with C100 reinforcement at its base
 - Angle iron
- 10-year guaranteed anti-corrosion hot-dip galvanising treatment



INSTALLATION CONDITIONS

- Soil conditions: stabilised and/or coated soil
- Minimum lane length: 40m minimum excluding ends
- Brackets spaced every 4m
- Construction height: 66cm (+2cm/-1cm)
- Minimum distance from obstacles:
 - Working width for protruding obstacles: 0.60m in N2
 - Dynamic deflection for level differences: 0.50m in N2



OPTIONS

- Ends: elements buried at a constant height or lowered over 12ml, or high-performance end tested in accordance with standard XP ENV1317-4
- Curves: the correct operation of the system is ensured by specific components and implementation, if necessary depending on the radius of curvature (see installation instructions)
- Support posts on plate: specific components can be used to ensure that the system operates correctly, depends on soil characteristics (contact us)