



# MARKING AND SURFACING OF CYCLE PATHS



A complete range of products to secure and support the development of cycling traffic



SAFE MOBILITY,  
OUR FUTURE





The rise of soft mobility is now a major challenge in meeting environmental and public health imperatives and is leading towns and cities to rethink their space and amenities.

Aximum is supporting this change with coatings and marking products that contribute to user safety and the attractiveness of cycle networks, to promote this eco-responsible mode of travel.



## Guiding users with horizontal markings

It is important to ensure the legibility of the signs by providing **suitable and NF-certified horizontal road markings** guaranteeing high performance in terms of visibility and grip.

- To create temporary signs and temporary worksite signage:

**TEMPORARY EASY MARK**

- To create permanent cycle lanes in urban areas able to withstand heavy road traffic:

**DURALINE S3**

- To create permanent cycle lanes in urban areas and on the road:

**ARPONT VILLE-ROUTE & TYPHON VILLE-ROUTE**



	TEMPORARY EASY MARK	DURALINE S3	ARPONT VILLE-ROUTE	TYPHON VILLE-ROUTE
Product type	Preformed tape made of methacrylate resin reinforced with fibreglass		Water-based cold coating	Water-based paint
Installation*	Self-adhesive cold-applied tape	Tape ready to apply thanks to its integrated thermoplastic glue	Manual application	Spray application
Anti-slip	++	+++	++	++
Durability	++	+++	++	+
Product advantages	Quick and easy to install	Robust and long-lasting	NF Environment certification	Versatility

\*Consult the technical data sheets for more information.

\*\*Find all our products in our catalogue and from your sales contact.

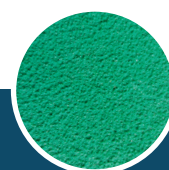
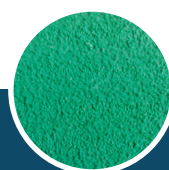
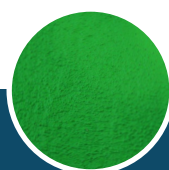
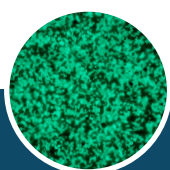


We propose **our expertise** in order to **train your employees or improve their skills** in the use and application of marking products and urban coatings.

## Indicating dedicated lanes with coloured and luminous coatings

In addition to horizontal road signage, colouring lanes improves the visual identification of lanes dedicated to cycle traffic; therefore contributing to channelling cycle traffic and ensuring **a peaceful cohabitation between different types of users.**

- To provide luminous guidance in areas with little or no light: **LUMIROC**
- To create coloured cycle routes: **ARUM TRAFIC & TYPHON TRAFIC**
- For sustainable cycle lanes in areas at risk and with heavy road traffic (road crossings, advanced stop lines, roundabouts, etc.): **CYCLAD'**



	LUMIROC	CYCLAD'	ARUM TRAFIC	TYPHON TRAFIC
<b>Product type</b>	Two-component coating + luminescent aggregates	Two-component anti skid coating	Toluene-free solvent-based paint + anti skid fillers	Water-based paint + anti skid fillers
<b>Installation*</b>	Manual application with drop on aggregates	Manual application with a squeegee	Spray application	
<b>Anti-slip</b>	+++	++	+	+
<b>Durability</b>	+++	+++	++	++
<b>Product advantages</b>	Luminous guidance without energy consumption	Driving comfort	High application yields	Environmentally-friendly



# OUR EXPERTISE

« Development, manufacturing and marketing of products ranges intended to make mobility safe and sustainable. Our industrial expertise and our network of partners enable us to support you through the various stages of your project. »

# OUR COMMITMENTS

## # ADVISE

Propose a range of products and help you to choose the best solution.

## # SUPPLY

Manufacture, to package and to deliver the products of your choice in the best possible conditions.

## # TRAIN

Support you with a complete package for training on our products and how to apply them.



**AXIMUM INDUSTRIE**

5 Rue du Quai de Débarquement  
76100 ROUEN - France

[aximum.com](http://aximum.com)