

TYPHON® TRAFIC



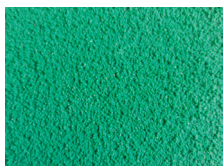
TRAFFIC RESISTANCE



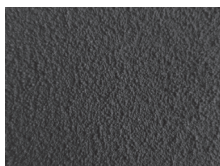
Flame red



Light blue



Traffic green



Signal black

« Sprayable anti-slip coating that improves the visual perception of surfaces such as cycle tracks and reserved parking spaces, and can be used to create enhanced markings. »

ADVANTAGES

► USE

- **High grip** providing a non-slip coating for cycle tracks, crossable platforms, etc
- Can be used for enhanced markings in pedestrian areas and meeting areas
- **Good durability**: paint-based coating resistant to road traffic
- Tinting bituminous coatings such as printed asphalt where the surface appearance needs to be preserved
- **Wide range of colours** to suit all requirements

► USE

- **Very good yields** thanks to spray application
- **Protects users' health**: guaranteed solvent-free and free from toxic pigments
- Not subject to regulations on the transport and storage of hazardous materials
- **Environmentally-friendly**, water-based product

SOCIAL AND ENVIRONMENTAL BENEFITS

- **CIRCULAR ECONOMY**
Use of recycled water in manufacture
75% recyclable packaging
- **WASTE REDUCTION**
Sakapo® reduces the weight of special waste by 65%
- **MADE IN FRANCE**
Made in the Normandy region



TECHNICAL CHARACTERISTICS

- Coating containing single-component acrylic water-based paint and silica fillers
- Packaging:
 - Paint in 25kg net metal buckets fitted with Sakapo®
 - Silica in 25kg net bags
- Other packaging: please contact us
- Colours: Flame Red 3000, Light Blue 5012, Traffic Green 6024, Signal Black 9004

Other colours on request



IMPLEMENTATION

- Apply to a clean, dry surface free of all loose matter
- Hydrocarbon surfaces with no dye penetration
- Apply to a clean, dry surface
- Surface temperature limits: 10°C < T < 40°C
- Maximum humidity: 80%
- Do not apply if there is a risk of rain
- Two-coat spray application with powdering of fillers between the two coats applied by airless machine
- Allow to dry thoroughly between coats

NB: See the technical file accompanying this presentation sheet

CONSUMPTION*

	Dual-coat
Typhoon Colour rate	2 x 400 to 500g/m ²
Silica MSX rate 0.2/0.8	1 to 2kg/m ²
Drying time	15 to 30min/coat
Return to service	1hr after application

* Depending on the type and condition of the surface



SAFETY - STORAGE

- Product for professional use, non-harmful, non-irritant, non-flammable
- Storage: in a dry, ventilated place, away from frost, sunlight and any source of heat
- Shelf life: 12 months from date of manufacture, in unopened original packaging
- Soiled packaging and cleaning and rinsing products are waste to be treated in accordance with current regulations
- See the Safety Data Sheet at www.quickfds.fr