

CYCLAD'

TRAFFIC RESISTANCE



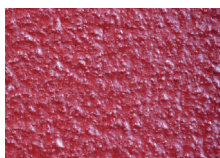
Sky blue



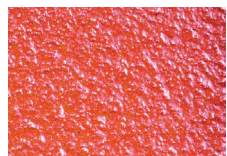
Yellow green



Traffic green



Oxide red



Flame red

Coloured coating that makes cycle traffic safer thanks to its grip qualities and improves the visibility of high-risk routes and areas.

ADVANTAGES

USE

- Coating designed to improve traffic safety on cycle tracks, particularly in high-risk areas: road crossings, cyclist stop areas, property exits, roundabout entrances and exits, etc.
- **High level of grip** (SRT > 0.65) provided by an anti-slip filler incorporated into the resin and offering high hardness performance
- The contrast with the carriageway makes it possible to visually punctuate routes and makes them easier for other users to see
- **No powdering fillers** for greater ease of application and safety for cyclists
- Very good **resistance** to road traffic

USE

- **Rapid return to service** to minimise disruption to users
- Packaging and application method enabling use on small surfaces
- Coating guaranteed free of toxic pigments

SOCIAL AND ENVIRONMENTAL BENEFIT

- **MADE IN FRANCE**
Made in the Normandy region



TECHNICAL CHARACTERISTICS

- Two-component coating based on methacrylic resin and calcined bauxite
- Packaging: 20kg net kits with bagged hardener (2 x 200g)
- Colours: Sky Blue 5015, Yellow Green 6018, Traffic Green 6024, Flame Red 3000 and Oxide Red 3009

Other colours on request



IMPLEMENTATION

- Apply to a clean, dry surface free of all loose matter
- Hydrocarbon surfaces with no dye penetration
- Concrete surface more than 28 days old, free from slurry and primed with Indasprim
- Surface temperature limits: $5^{\circ}\text{C} < T < 35^{\circ}\text{C}$
- Maximum humidity: 80%
- Do not apply if there is a risk of rain
- Mix the resin and hardener with an electric mixer and apply immediately with a smooth or notched (4mm) metal or hard rubber scraper
- For "open" surfaces, apply a percolation coat (1.4 to 1.8kg/m^2) before the finish coat

NB: See the technical file accompanying this presentation sheet

CONSUMPTION*

	Cyclad'
Product rate	3 to 4kg/m^2
Drying time	30 to 40min

* Depending on the type and condition of the surface



SAFETY - STORAGE

- Product for professional use
- Storage: in a dry, ventilated place, away from frost, sunlight and any source of heat
- Shelf life: 6 months from date of manufacture, in unopened original packaging
- Soiled packaging and cleaning and rinsing products are waste to be treated in accordance with current regulations
- See the Safety Data Sheet at www.quickfds.fr