

# AIRPORT SIGN

A product from



« Reinforced sign specially designed for airport environments, for communicating an instruction or providing information. »

## STRENGTHS

### > USE

- Durable panel with strong resistance to the constraints of airport runways such as strong winds, aircraft movements, etc. (wind resistance: 480 km/h)
- Enhanced security in case of impact thanks to a shearable mast (aircraft accidental impact frangibility: 200 joules) and its retaining cable preventing ejections
- Customs dimensions to satisfy all layout configurations
- Excellent visibility day and night : class 2 retroreflective film (180 Cd/lux/m<sup>2</sup>)
- Sign complies with International Civil Aviation Organization (ICAO) specifications

### > INSTALLATION & MAINTENANCE

- Anodised aluminium masts and panels, stainless steel bolting: corrosion-free, easy to handle and 100% recyclable
- Anchor rod positioning template for easy installation
- Harmonization of bolts to facilitate maintenance operations with a single tool

## SOCIAL AND ENVIRONMENTAL BENEFIT

- **CIRCULAR ECONOMY**  
100% recyclable product
- **ENERGY EFFICIENCY**  
Manufacturing process reduces energy consumption by 75%
- **WASTE REDUCTION**  
Designed to reduce raw material wastage
- **MADE IN FRANCE**  
Made in the Centre-Val-de-Loire region



# AIRPORT SIGN



## TECHNICAL DATA

- Reinforced panel with rails on the back for attachment to mast
- Class 2 retroreflective film (180 Cd/lux/m²)
- Fluted shearable aluminium mast Ø 90 mm
- Cast aluminium base

### SAMPLE PANEL DIMENSIONS\*

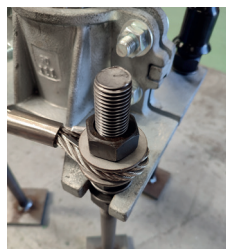
LxH Panel (mm)**	LxH Design (mm)	Number of mounts	Weight (kg)
1074x624	1050x600	2	46
1225x624	1200x600	2	48
1524x624	1500x600	3	51
2024x624	2000x600	3	73

\* Please contact us for other dimensions

\*\* Can be tailored to different designs

### MOUNTING/GROUND CONNECTION

- Mast attached to a base by bolts
- Mast fitted with a cap
- Assembly secured to the ground by anchor rods



Fasteners

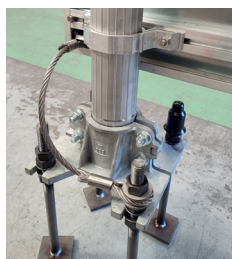
### SUPPORT PANEL CONNECTION

- Aluminium clamps
- M10 stainless steel bolts



## OPTIONS

- Retaining cable
- Bird spikes



Retaining cable

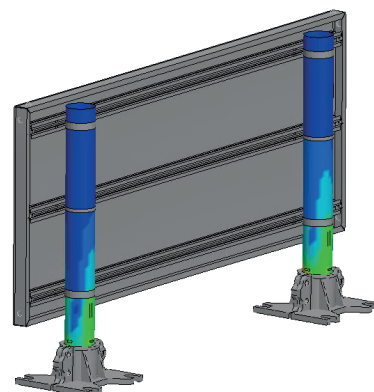


Bird spikes



## COMPLIANCE

- Compliance with standards requirements: ICAO



## REGULATIONS

Signs are composed of two distinct groups:

- Instruction signs indicate a point not to be crossed; they feature white text on a red background
- Information signs indicate a location (yellow text on a black background), or information (black text on a yellow background)

Source: CHEA A-I-1



**AXIMUM INDUSTRIE**  
7, rue Frédéric Chopin - 37310 Chambourg-sur-Indre, France  
Tel.: +33(0)2 47 91 14 90  
[aximum.fr](http://aximum.fr)